

NGAWHA INNOVATION & ENTERPRISE PARK

INFORMATION FOR
PROSPECTIVE TENANTS

April 2023



PARK VISION

Ngawha Innovation & Enterprise Park is a new kind of business park. A collaborative community that is all about growing people, growing innovation and growing enterprise.

It is a place that connects local people, businesses and innovation to generate opportunities for all.

Through a circular economy ethos (creating value, regenerative resource use and zero waste), through relationships, shared work and values, and positive exchanges, a sense of whanaungatanga, or family, together we are creating a unique culture for success.





CORE CONCEPTS

Extracting more value from regional strengths

- Value added manufacturing and processing
- High value crops
- Value not volume
- Under utilised Māori land.

Targeted at employment outcomes

- Creating employment based on business needs - bespoke
- Building and recognising skills
- Equipping the workforce for future jobs
- On the job learning bringing trainers and facilitators on site.

Circular economy – sharing waste streams/by-products, dealing with waste on site

- Saves planet
- Saves business cost
- Adds to business imprimatur
- Working towards 5 Star Green Star Community rating.

Nurturing innovation

- Attracting R & D alongside business
- New and leading edge business.

ABOUT THE PARK

- Located approx 3km east of Kaikohe in the Mid North
- Greenfields development – 240ha total, 60ha set aside to protect wetlands and forests
- \$50m invested by the government and private sector in Stage 1 development
- Access to 750,000 m³ water from Matawii Dam for high volume users
- Discounted line charges and wholesale electricity from Top Energy's geothermal power
- Core infrastructure is in place and Stage 1 serviced platforms are ready for occupation
- Resource consents in place through Special Planning Zone
- Developed and managed by Far North Holdings Ltd.



In the Innovation Centre, Northland Inc offers the following:

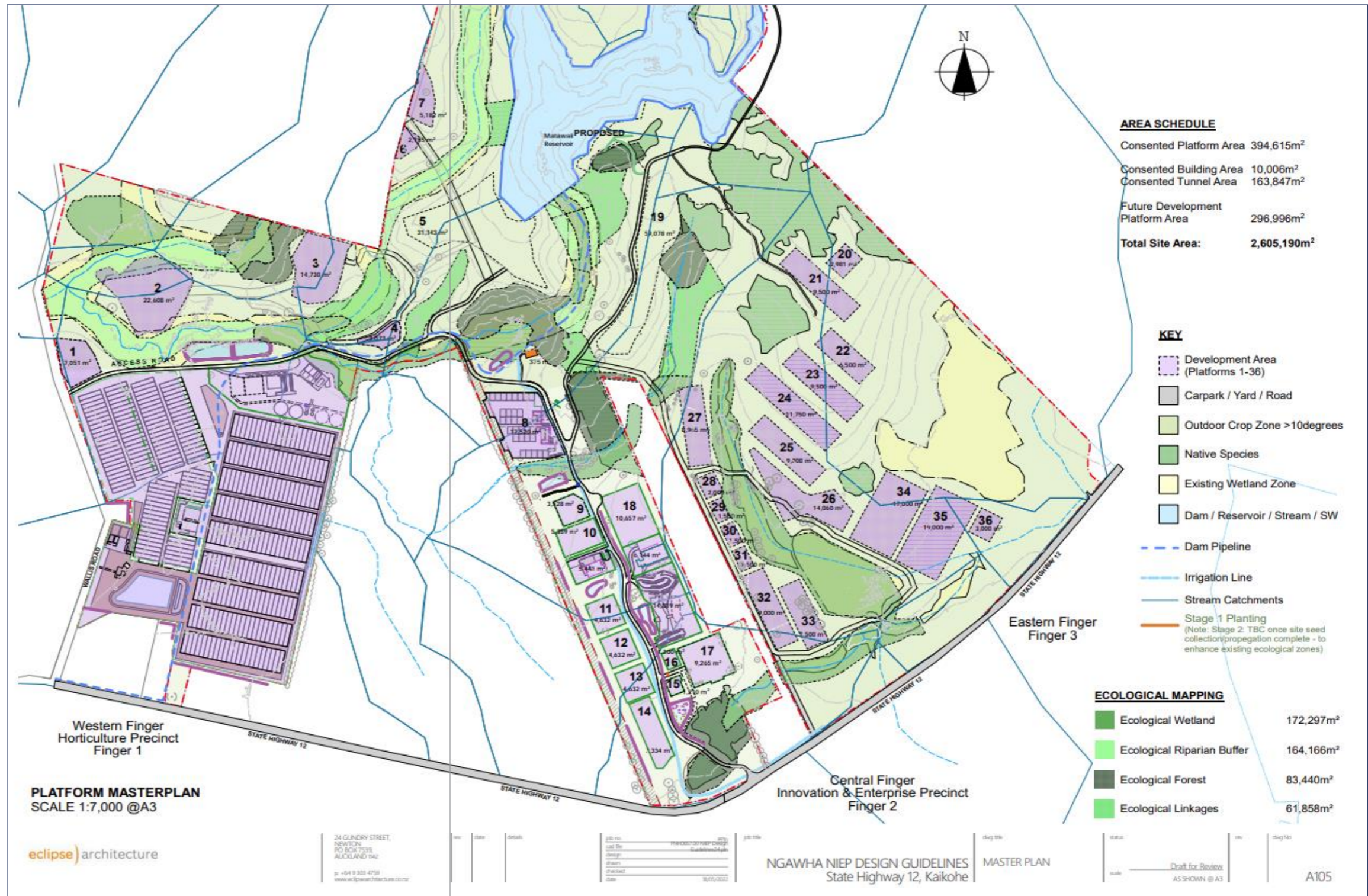
- Shared and dedicated office space – hot desks
- Café
- Video conferencing, meeting and conference rooms
- Laboratory spaces.

IN THE HEART OF NORTHLAND



3.5 hours by road to
Auckland CBD, and
rail link from Whangārei
to Auckland.

MASTER PLAN



WHAT'S ON OFFER AT THE PARK?

- Flexible lease or land purchase options
- Design and build packages
- Rent to purchase
- Equity partnerships (facilitated on case by case basis)
- All development contributions are paid
- No architect or design fees for concept plans and costing to allow you to assess the location and if it fits your business needs
- No project management costs
- Horticulture areas for covered and uncovered cropping, trial crops, nursery areas
- Services to support businesses including:
 - Industry clusters for manufacturing and production support and scale up natural products, food & beverage and other emerging businesses
 - Workforce development skills training and employment support
 - Onsite education and skills training providers.



WHAT'S ALREADY HERE?

- Kaikohe Berry Fruit Ltd
- Natural Products Cluster – 10-14 SME's producing cosmeceuticals and nutraceuticals
- Crops – peruperu (traditional Māori potatoes)
- Nursery – area for coffee nursery and native plants for planting eco sourced plants in the Park's landscaping
- Te Pukenga/ NorthTec – vocational training
- Regent Training Centre
- Innovation Centre – Northland Inc, Far North Holdings Ltd and others in co-working space.



WHAT'S COMING?

- Plant Bioactives company – space in second lab
- Shared Food Manufacturing Facilities – including bioactive extraction company that is bringing manufacturing and equipment for use by others
- High tech engineered timber manufacturer
- Native timber kiln and manufacturing facility
- Fermentation & brewing cluster
- Active engagement with 80+ businesses over the past quarter.

NGAWHA & INNOVATION & ENTERPRISE PARK

WELCOMING PARK AND TENANT ENQUIRIES

Andy Nock

CEO Far North Holdings Ltd,

P: 09 402 5659 | **E:** andyn@fnhl.co.nz

Sue Dobbie

Chief Connector, Ngawha I&E Park

P: 0274 567 524 | **E:** ssdobbie@gmail.com