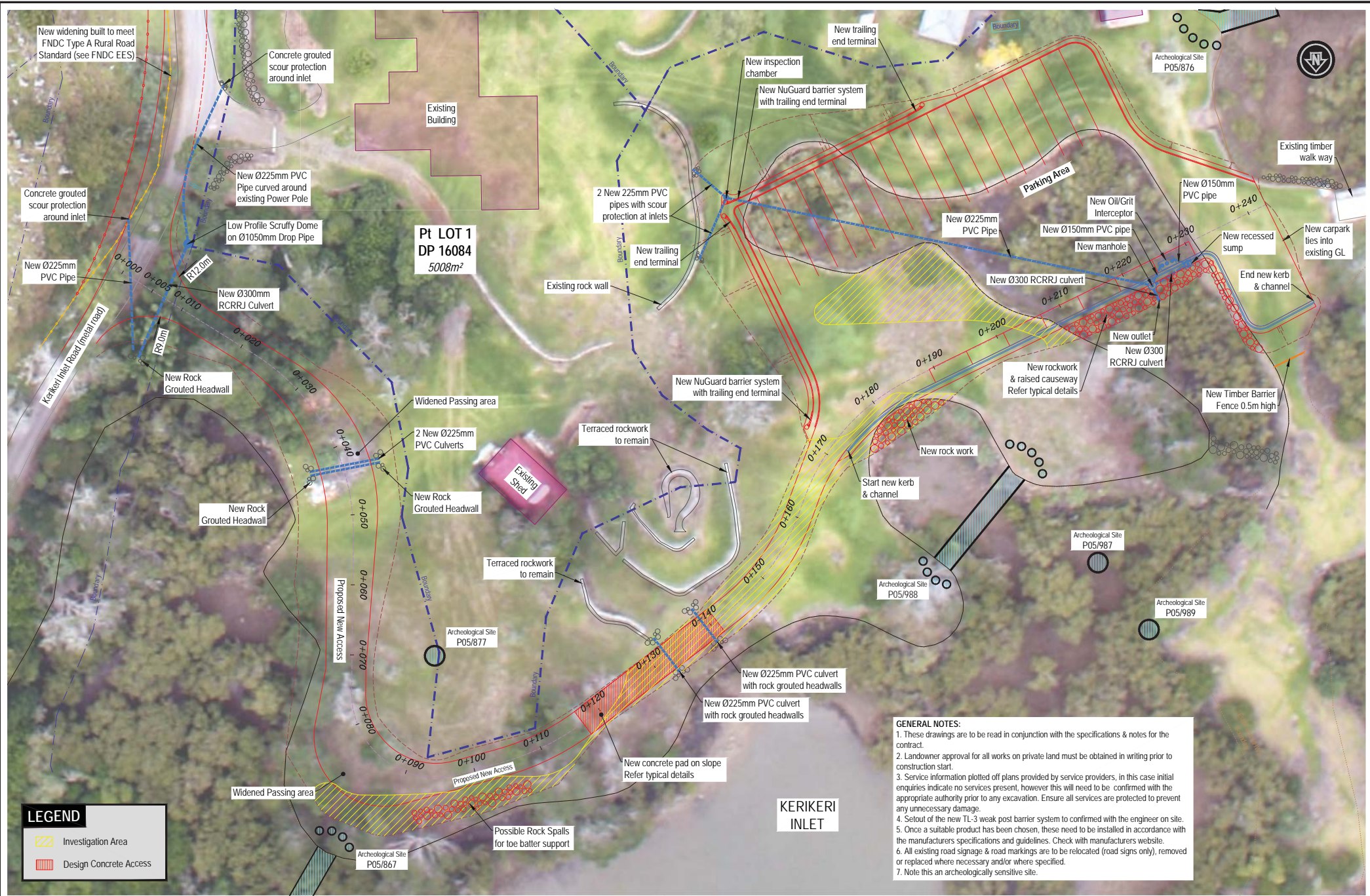


D:\Civil_3D Projects\FNHL Windsor Inlet Development\dwg\Windsor Inlet Design\Latest.dwg Work Station: PC18 - (Internal Reference Only)



| LEGEND | |
|--------|------------------------|
| | Investigation Area |
| | Design Concrete Access |

GENERAL NOTES:

1. These drawings are to be read in conjunction with the specifications & notes for the contract.
2. Landowner approval for all works on private land must be obtained in writing prior to construction start.
3. Service information plotted off plans provided by service providers, in this case initial enquiries indicate no services present, however this will need to be confirmed with the appropriate authority prior to any excavation. Ensure all services are protected to prevent any unnecessary damage.
4. Setout of the new TL-3 weak post barrier system to be confirmed with the engineer on site.
5. Once a suitable product has been chosen, these need to be installed in accordance with the manufacturers specifications and guidelines. Check with manufacturers website.
6. All existing road signage & road markings are to be relocated (road signs only), removed or replaced where necessary and/or where specified.
7. Note this is an archeologically sensitive site.

| | | | | | | | |
|-----------|------|-------|----------|------|--|-------------------------|--------------------------|
| DRAWN: | M.W. | DATE: | 13/02/20 | REV: | | DRAWING STATUS - TENDER | BOUNDARY ACCURACY - HIGH |
| CHECKED: | C.H. | DATE: | 13/02/20 | REV: | | | |
| APPROVED: | | | | | | | |



| | | | |
|----------|---|-------------|--------|
| PROJECT: | Far North Holdings Limited Windsor Inlet Development Kerikeri Inlet, Far North District | JOB NO. | 1252 |
| TITLE: | PROPOSED NEW ACCESS - DESIGN LAYOUT | CLIENT REF. | - |
| SCALE: | 1 : 500 | SHEET NO. | DP1 RO |
| | ORIGINAL PAPER SIZE A3 | | |

D:\Civil 3D Projects\PNHL Windsor Inlet Development\dwg\Windsor Inlet Design LATEST.dwg Work Station: PC18 - (Internal Reference Only)



| | | | | | | |
|-----------|------|-------|----------|------|-------------------------|--------------------------|
| DRAWN: | M.W. | DATE: | 13/02/20 | REV. | DRAWING STATUS - TENDER | BOUNDARY ACCURACY - HIGH |
| CHECKED: | C.H. | DATE: | 13/02/20 | | | |
| APPROVED: | | | | | | |



| | | | |
|----------|---|-------------|--------|
| PROJECT: | Far North Holdings Limited Windsor Inlet Development Kerikeri Inlet, Far North District | JOB NO. | 1252 |
| TITLE: | KERIKERI INLET ROAD - DESIGN LAYOUT | CLIENT REF. | - |
| SCALE: | 1 : 500 | SHEET NO. | DP2 RO |
| | ORIGINAL PAPER SIZE (297.00 X 420.00 mm) | | |